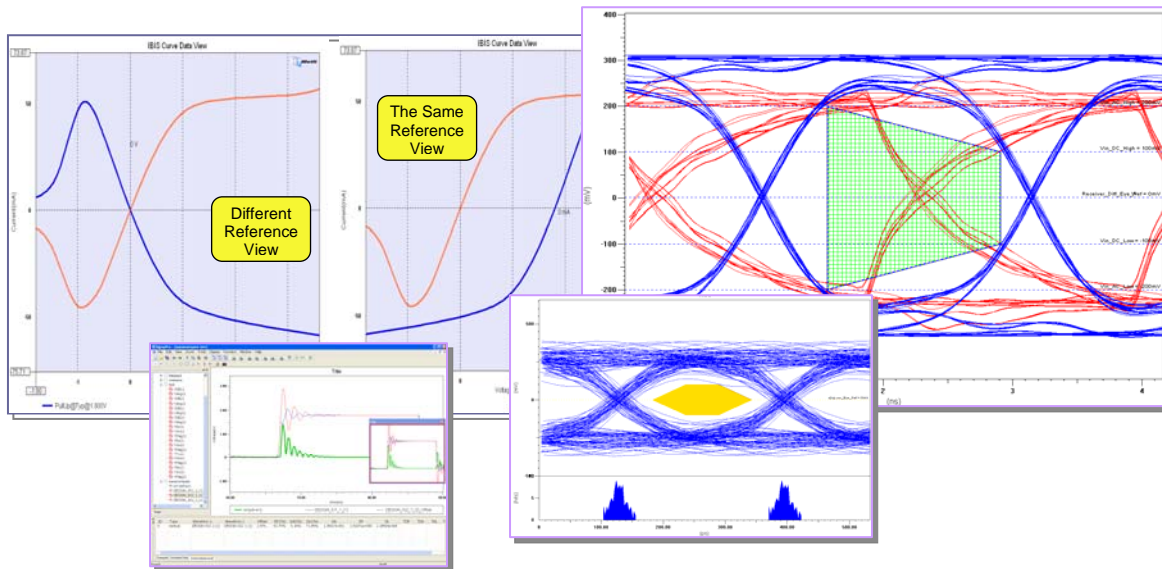


SignalMeth™

- Multi-Format Waveform Viewer with Analysis Capabilities



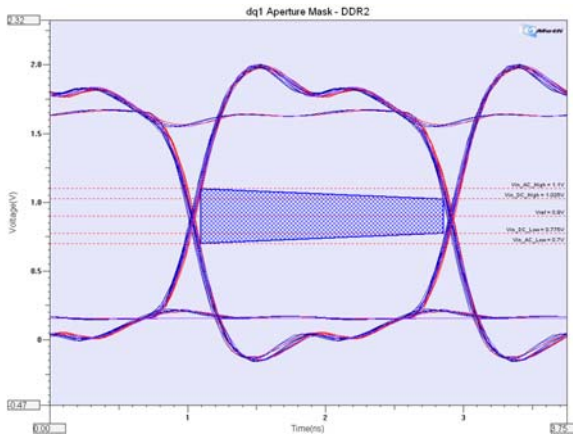
SignalMeth™ Overview

Signal Integrity specialists and Design Engineers are dealing with Waveforms/Signals everyday. A high-performance waveform/signal post-processing tool is critically important for improving work efficiency and a must-have for your next High-Speed system design.

SignalMeth™ is a utility tool designed for Signal Integrity analysis and signal processing. It provides an **environment** and many advanced analysis functions. It also includes the advanced IBIS model analysis, signal / waveform viewing functionality, preset / programmable SI analysis features and a unique signal / waveform comparison capability. It is powerful and easy to use. It provides a direct and visual inspection for signal, verification runs and waveform post processing. SignalMeth™ enables customized measurement and processing for Signal Integrity analysis.

SignalMeth™ Application Module is a revolutionary methodology for waveforms / signals post analysis. It provides a very flexible, yet comprehensive way for complex standard-compliant analysis and validation. (IBIS and DDR2 are available for current release).

- DDR2 Standard Analysis Capability
- IBIS Analysis Capability
- Multi-Format Waveform Viewing Capabilities
- Flexible Granularity and Grid Control
- Eye Diagram Analysis with Mask/Aperture and Jitter Distribution
- Modulus, Real/Imaginary and Angle FFT Processing
- Spice Stimulus Generator with code viewing
- Waveform Comparison
- Waveform Manipulation
- Slope Measurement
- Basic Search and Report



DDR2 Standard-Compliant Analysis Application Module

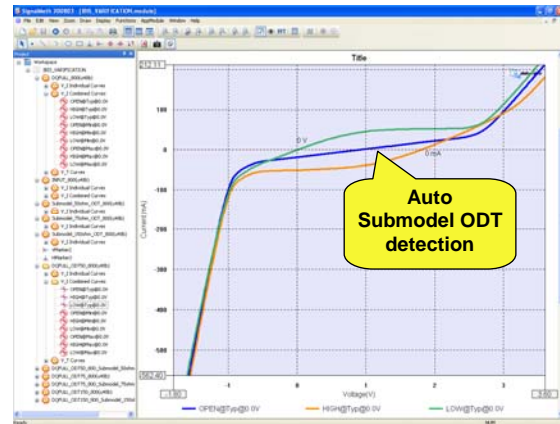
SignalMeth™ provides an easy to use DDR2 standard-compliant analysis application module for your DDR2 design signal analysis. It can accept your scope data or simulation data (HSpice, PCB SI, Hyperlnx, etc.). Key capabilities are:

- DDR2 SI and Timing Analysis
- Comprehensive slew measurement and automatic derating table calculation
- DDR2 Spec setup and load, save-as capabilities
- Flexible waveform set-up systems to define the usages in your DDR2 systems
- Automatic DDR2 analysis report
- Multi-format waveform support
- Standard-Compliant validation
- Complete Eye diagram / Aperture / Jitter Distribution views

IBIS Model Analysis Application Module

SignalMeth™ provides an IBIS model analysis application module for easy and visual IBIS buffer model inspections. It can:

- Selective loading IBIS buffers
- Automate the same reference curve view for loaded buffers
- Auto-generated HIGH, LOW and OPEN state curves
- Auto detection for referred Submodel
- Report for non-monotonic, loadline and on-die termination
- Project module save, save-as and open functionalities.



Multi-Format Signal/Waveform Viewer

SignalMeth™ can accept many different format signal/waveform files from the tools as well as from the scopes and text, Microsoft Excel files, etc. It has very **high** performance import capability, at a very reasonable price. It is **an excellent replacement tool** for other waveform viewing tools.

Multi-functional Signal/Waveform Viewer imports:

- Synopsys HSpice outputs: .tr#, .ac#, sw#, .lis
- Cadence PCB SI output: .sim
- SiSoft QSI output: .csd

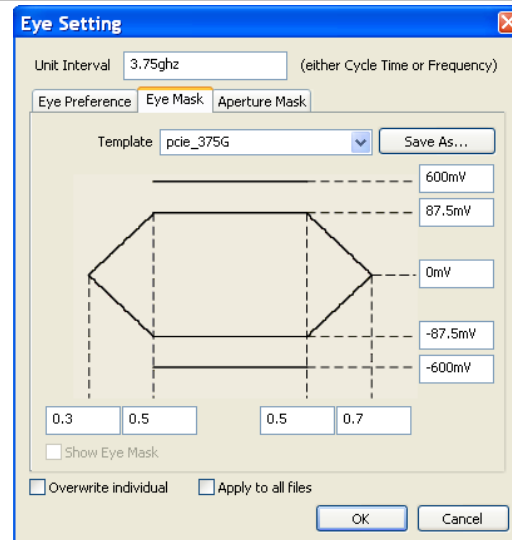
- Mentor HyperLynx output: .csv
 - Cadence PSF ASCII: .tran
 - TISpice3 output: .prt
 - LTSpice output: .raw
 - Touchstone S-parameter: .snp(.s?p)
 - Agilent Scope Date file: .txt
 - Tektronix Scope Date file: .txt
 - LeCroy Scope Data file: .dat
 - Microsoft Excel: .csv
 - IBIS buffer curves: .ibs
 - Other text formats: .dat, .txt
- Output:
- Cadence PCB SI .sim
 - Excel .csv
 - SignalMeth .iom

It also contains build-in analysis viewing capabilities, such as:

- Eye diagram
- FFT with Modulus, Real/Imaginary and Angle views
- Named Eye Mask View with auto-fitted function
- Named Threshold View
- Automatic DDR2/DDR3 Aperture View
- Jitter Distribution View
- Standard measurements
- Free draw
- Free style defined View
- Pan View
- Full-functional Granularity Control
- Easy Grid Display Control
- Tree Structure view for HSpice and TouchStone files

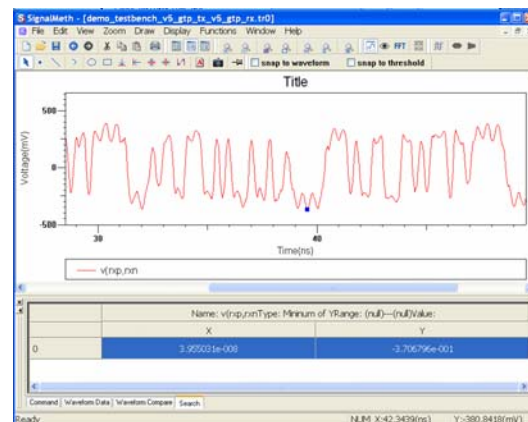
Comprehensive Eye Mask / Aperture / Jitter Distribution Viewing

SignalMeth™ has comprehensive viewing features for automatic Eye Masks and Apertures as well as Jitter Distributions. It allows users to name a setting and save it for future use.



Basic Waveform Search Functionalities

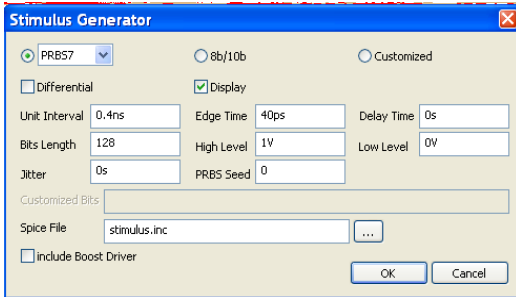
SignalMeth™ provides basic waveform search functionality for finding waveform points by CrossX and Y, on Rising and Falling edges with specific region setting, etc.



Convenient Spice Stimulus Generator

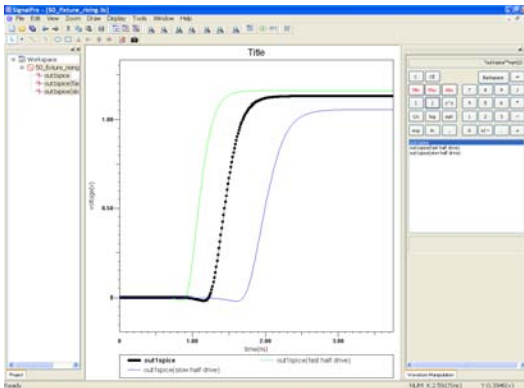
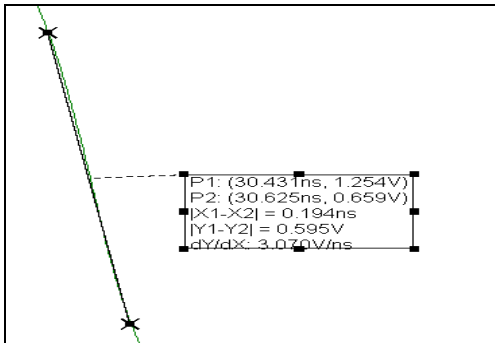
SignalMeth™ has a build-in Spice Stimulus Generator for creating Spice stimulus subcircuits (.subckt, HSpice compatible). The user can select pre-coded bit scheme (PRBS, 8b/10b) or customize bit stream. It allows the user to define UI, rising/falling edge time, delay time, bit length and levels, random jitter,

PRBS seeds, etc. It can be defined for single-ended or differential-ended stimulus even with a boost driver stimulus for pre-emphasis. The bit stream can also be displayed for coding, jitter checking and other purposes.



Slope Measurement

A straight-forward slope measurement capability to make your complex measurement easy.



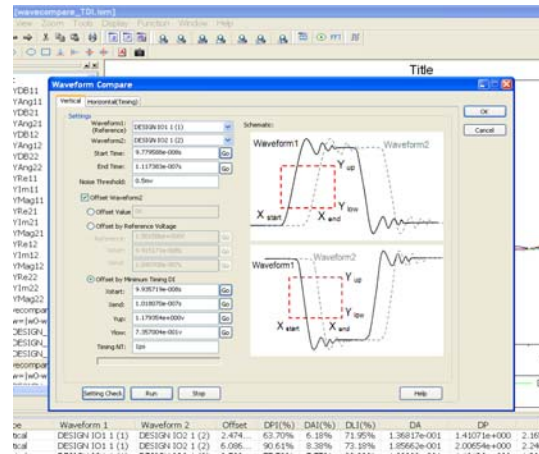
Build-in Signal/Waveform Manipulation functionality

SignalMeth™ contains many calculation functions, such as +, -, *, /, exp. x^y, sqrt, log, ln, 1/x and abs, min/max, etc. for signal / waveform manipulations.

Unique Signal/Waveform Comparison Functionality

SignalMeth™ includes a build-in GUI based Signal/Waveform Comparison capability. It can compare two signals / waveforms quantitatively. The differential Index (DI)* can indicate how much difference between two signals/waveforms to give the designers/engineers a clear idea of signal quality. It also enables tool automations for design optimization purposes.

Signal/Waveform Comparison command-line executable and DLL are available for integration with other tools.



* US and China Patent pending